



Real-Time Insights For A Real Advantage





About Zebra Manufacturing Supplies

Zebra offers the latest in manufacturing technology to build the factory of the future

Today's plant floor is infinitely more complex than before. It requires the knowledge and agility to track-trace and optimise every process, asset and resource with pinpoint, end-to-end accuracy.

Zebra puts you in control of an agile manufacturing plant capable of consistently producing product on cost, on plan, and on spec with an optimised pace of progress and transparency.

Find out more at www.zebra.com/supplies

Industry Trend and Overview – Manufacturing

In a 2017 Plant Floor study*, manufacturing executives stated that asset management is essential to success. They want real-time asset management and quality control of goods throughout the production process, and tracking assets is taking center stage in manufacturing.

Companies can no longer afford to track products solely at Goods-In and Goods-Out. According to survey respondents, only 8% have real-time monitoring throughout the entire manufacturing process. However, 35% expect to add this capability within the next five years.

1. Inventory and Material Management

Along with wearables and voice solutions, manufacturers are adding RFID alongside existing barcode technologies to provide a more connected plant floor. IoT is already beginning to transform manufacturing and companies are increasing their usage of RFID as a powerful tool to convert physical materials into digital assets that are easy to track in real-time on the plant floor.

2. Work In Progress Management

Today, 62% of those surveyed use pen and paper to track vital manufacturing steps and 47% are using spreadsheets or a computer on wheels. The use of pen and paper to track WIP is highly inefficient and makes the process susceptible to human error. While plant floor managers can use the data stored in spreadsheets to identify areas for improvement, it's a time-consuming, manual process.

3. Component and Product ID

The rising number of product variants, growing price of materials and rising customer expectations are shifting companies to a quality-minded philosophy, paving an alternate route to growth and profitability. According to the survey, manufacturers are introducing quality checkpoints and automation at more stages in the process.

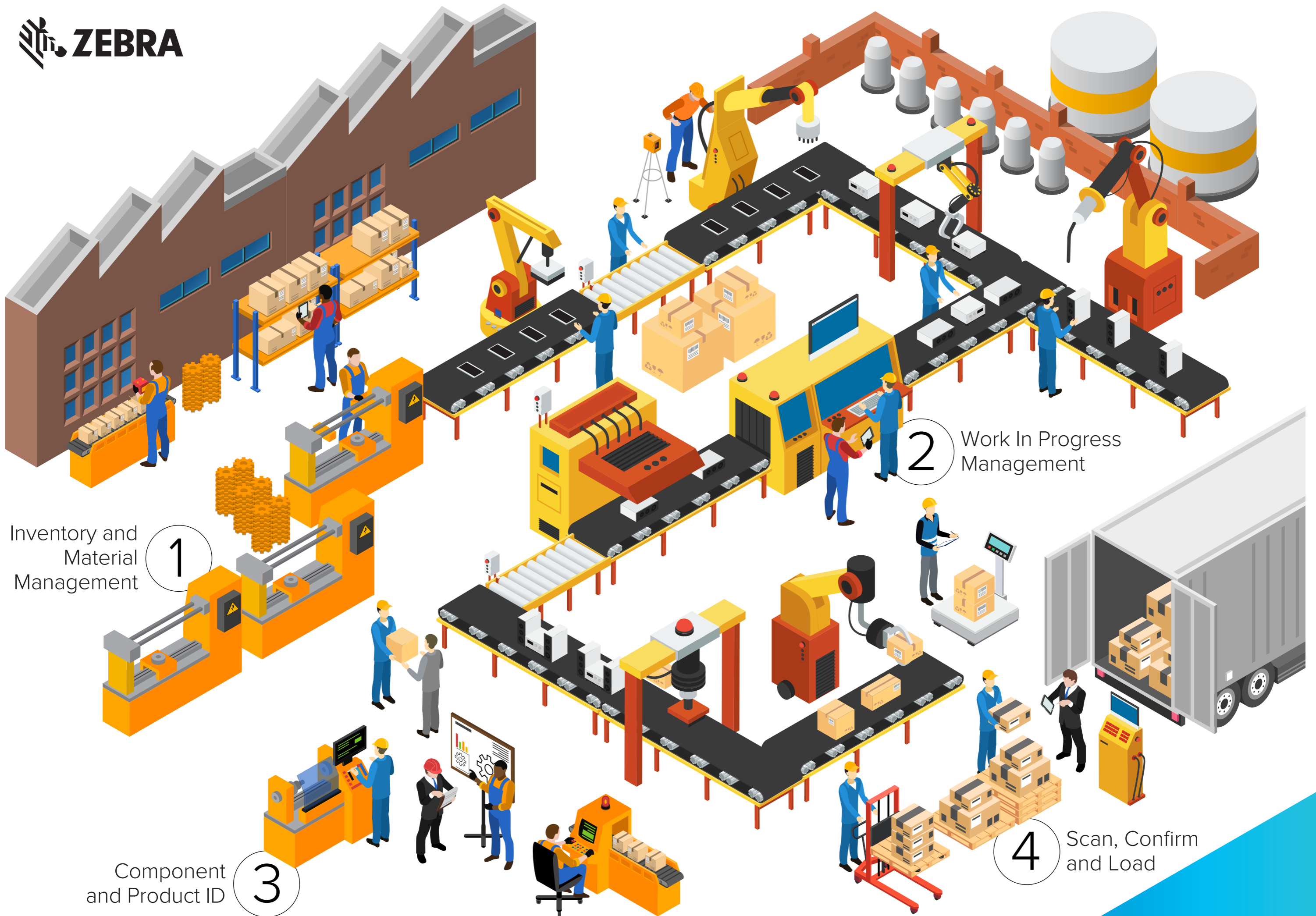
Checking the status of a product after it's assembled and finding an imperfection not only slows down production and increases costs, but it also makes it significantly more difficult to identify the point-of-failure.

4. Scan, Confirm and Load

Your loading dock is the last touch point before goods are shipped to the customer. Eliminate many of your manual processes and ensure goods get on the right lorry in the right order, while optimising trailer space. Zebra's mobile scanning, RFID tags and readers, and 3D sensing and camera technology with analytics software provide you with the automation you need to effectively verify shipping details, trailer assignments, and space utilisation to confidently ensure flawless fulfilment.

*2017 Plant Floor study is a research commissioned by Zebra Technologies and conducted with manufacturing executives across the globe, compiled and written by a reputable research partner.





Inventory and
Material
Management

1

2

Work In Progress
Management

Component
and Product ID

3

4

Scan, Confirm
and Load

Zebra Certified Supplies



Not all thermal labels are created equal. Purchasing Zebra Certified Supplies means you have access to a large selection of quality, pre-tested, supplies manufactured by a thermal industry expert, reducing your risk of non-compliance.

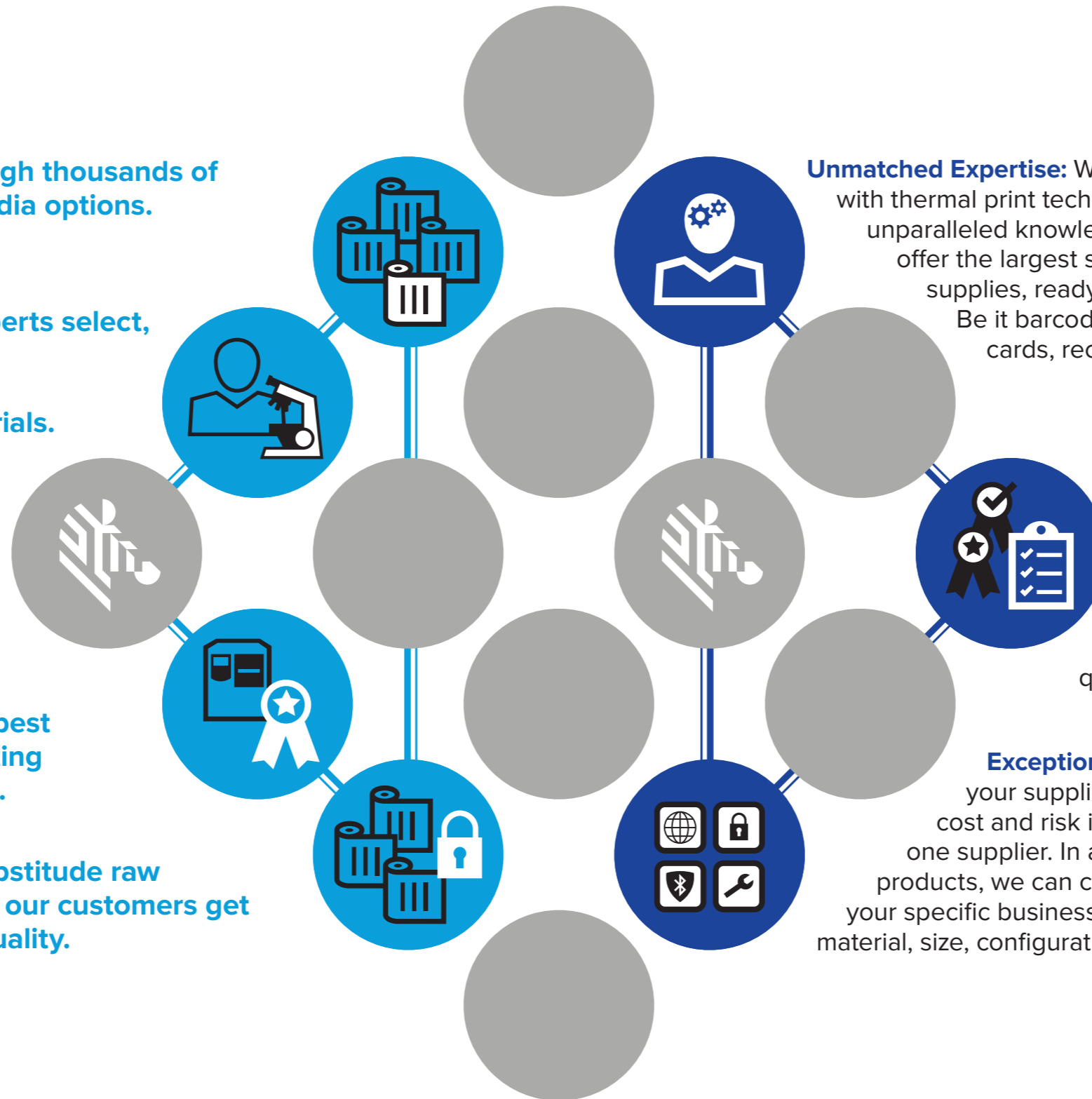
Why you should use Zebra Certified Supplies

We sift through thousands of available media options.

Our R&D experts select, convert and rigorously test all materials.

We certify only those offering the best thermal printing performance.

We never substitute raw materials, so our customers get consistent quality.



Unmatched Expertise: With over 30 years of experience working with thermal print technology, Zebra's Supplies R&D team has unparalleled knowledge of supplies for Zebra printers. We offer the largest selection of pre-tested thermal printing supplies, ready to meet virtually any application need. Be it barcode labels, RFID asset tags, wristbands, cards, receipt paper or ribbons, we've got it all.

Consistently Outstanding Quality: Zebra applies a 23-point rigorous ISO9001:2015 quality approval process, covering print quality, printer wear and tear and application testing on specific media. Our extensive testing delivers quality in every label — order after order.

Exceptional Service: Zebra can respond to all your supplies needs, thereby reducing the time, cost and risk involved in sourcing from more than one supplier. In addition to over 500 stock ZipShip™ products, we can custom-manufacture supplies to meet your specific business requirements, whether a specialty material, size, configuration or pre-print is needed.

With Zebra Certified Supplies, you can be guaranteed that your print-outs are exceptionally consistent and consistently exceptional.

Account for
every product
and possibility



Silverline On-Metal RFID Labelling for Inventory and Material Management

Application:

RFID asset tagging for metal and liquid-filled containers



Challenges

Illegibility:

RFID read range deteriorates when a traditional RFID label is applied on a metal surface or liquid-filled item

Lack of Visibility:

When labels are not easily readable, products cannot be identified quickly

Zebra Value-Add

Effective:

Innovative foam-backed construction, designed to enhance read range

Exclusive to Zebra:

Silverline RFID on-Metal tags are only available from Zebra and are suitable for printing and encoding through Zebra's purpose built printer

Key Features

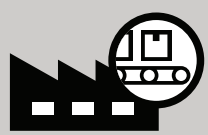
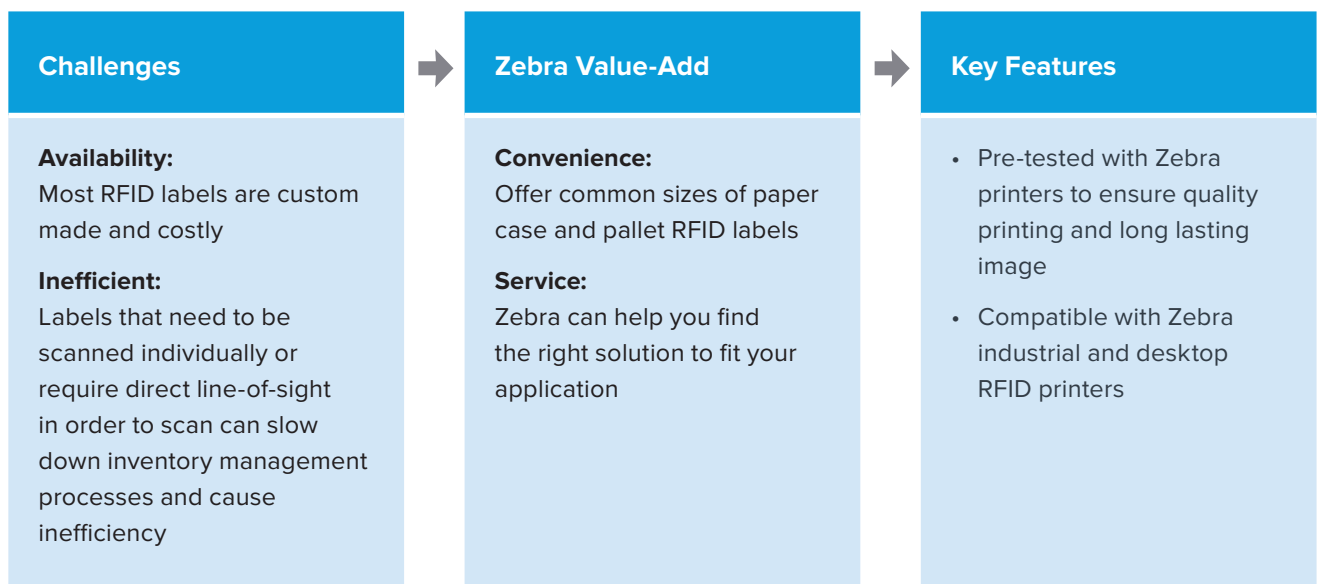
- Works on difficult to read metal and liquid-filled containers
- 4 sizes available from stock
- Read range up to 6 meters
- Must be used with Zebra ZT410 silverline printer



General Purpose RFID Case and Pallet Labelling for Inventory and Material Management

Application:

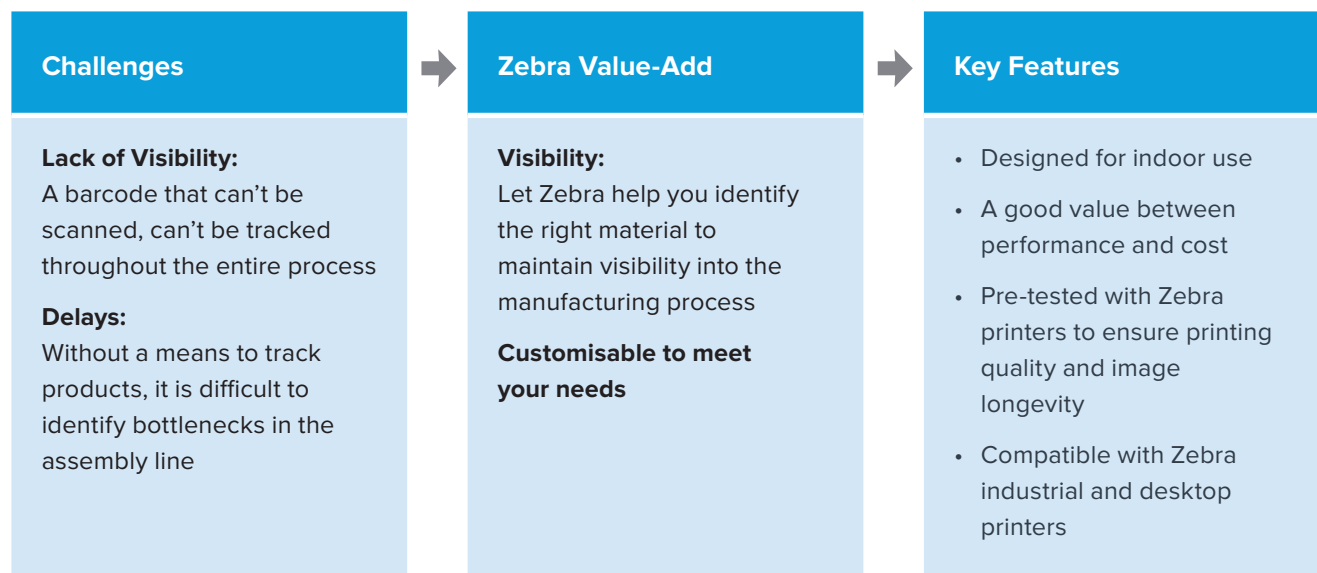
Labelling of cases and pallets with RFID tags to automate data capture



Z-Perform 1000T 190 Tag for Work-in-Progress Management

Application:

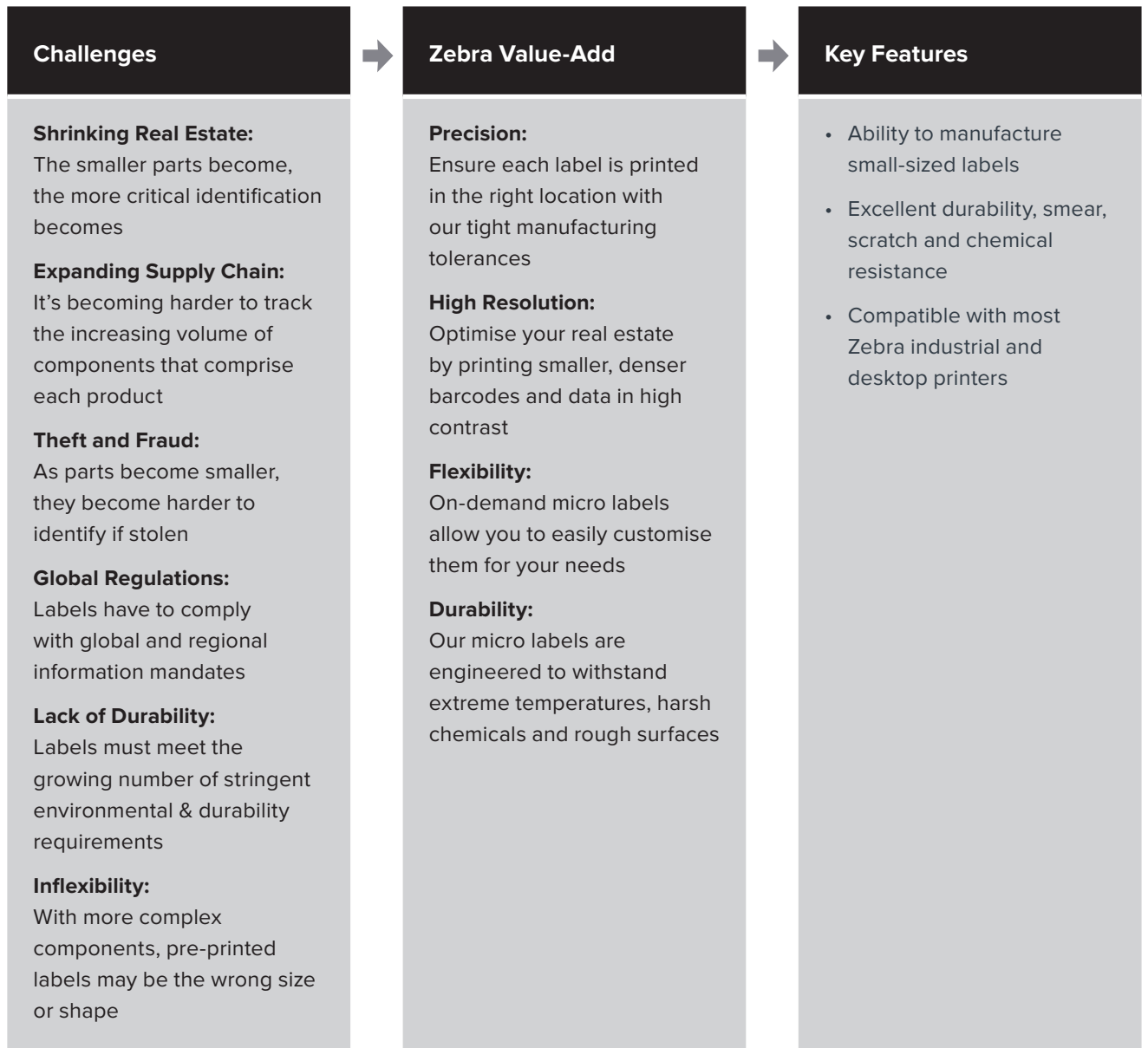
Work-in-progress tags to maintain visibility throughout the manufacturing process



Z-Ultimate 3000T White for Component and Product ID

Application:

Labelling of small parts or components in electronics



8000T Tyre Tack Extra for Tyre Labelling

Application:

Identify tyres with energy labels in accordance with regulation (EC) No 1222/2009



Challenges

Difficult surface:

Labelling tyres is difficult due to the uneven surface and the chemicals present in the tyre rubber

Regulatory requirement:

Tyres sold in the EU are subject to energy labelling requirements as they are responsible for 20-30% of a vehicles' fuel consumption



Zebra Value-Add

Tried and tested:

The material components required for this application are critical to ensure the labels remain adhered to the tyre for the required duration

Customisable:

Labels can be printed with the EU-specified label design along with any brand logo or colours as required

Durable image:

UV resistant inks ensures the coloured image will last even in outdoor storage conditions



Key Features

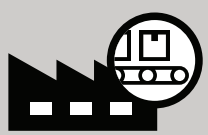
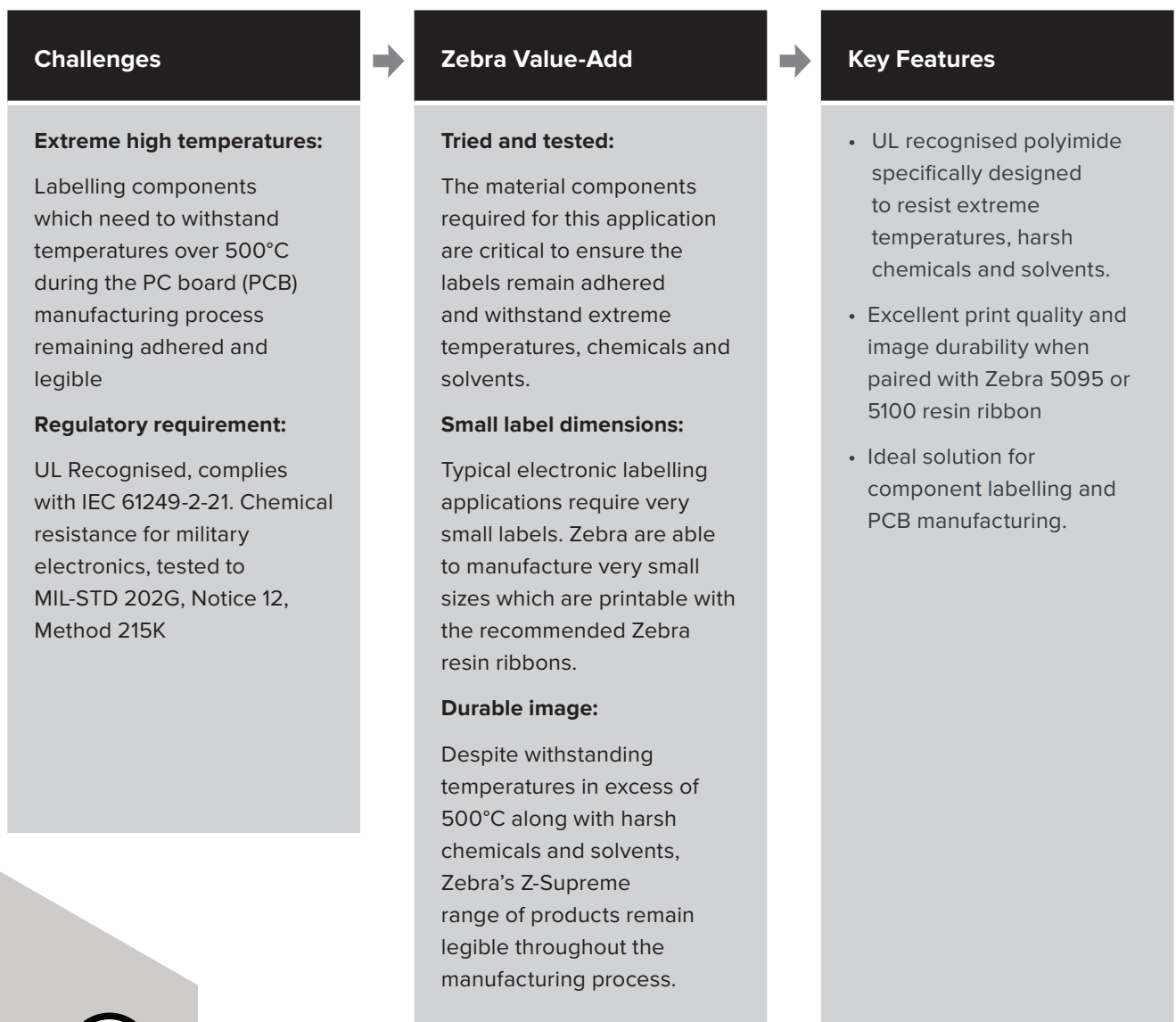
- High quality polypropylene labels with an aggressive adhesive specifically designed for tyre labelling
- Excellent print quality and image durability when paired with Zebra 4800 or 5095 resin ribbon
- Excellent initial tack and long-term adhesion to rough and uneven tyre profiles



Z-Supreme 4200T Yellow for Electronic component labelling

Application:

Identify electronic components which are subject to extreme high temperatures during the product lifecycle





This is only a selection of the labels we supply for Manufacturing: there are many more!



Silverline On-Metal RFID

Silverline labels are designed to work on a variety of surfaces including liquid bottles and metallic cylinders that in the past presented difficulties for RFID applications.



General Purpose RFID

Available in paper and synthetic materials that work on non-metallic surfaces, plastics or corrugate.



Z-Perform 1000T 190 Tag

190 micron matte paper tag.



Z-Ultimate 3000T White

Gloss white polyester label with general purpose permanent adhesive.



8000T Tyre Tack Extra

Gloss-white polypropylene label with a specially formulated aggressive adhesive to stick onto tyres.

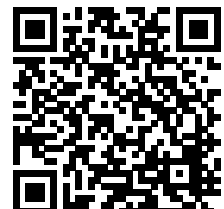


Z-Supreme 4200T Yellow

Gloss yellow polyimide label and permanent high-performance acrylic adhesive with ultra high temperature and extreme chemical resistance. UL approved for electronic equipment labelling.

Discover our most popular supplies, offering you great value and immediate delivery, on ZipShipSM.

Scan the QR code to go to ZipShipSM and find the right supplies for your application.





EMEA Headquarters

Email: mseurope@zebra.com **Web:** www.zebra.com

©2018 ZIH Corp and/or its affiliates. All rights reserved. Zebra and the stylized Zebra head are trademarks of ZIH Corp, registered in many jurisdictions worldwide. All other trademarks are the property of their respective owners.

08-2018